

Chimeric antigen receptor macrophages (CAR-M) induce antitumor immunity and synergize with T cell checkpoint inhibitors in pre-clinical solid tumor models

Stefano Pierini, PhD
Carisma Therapeutics

3675 Market St.
Philadelphia
Carismatx.com

Disclosure Information

I have the following financial relationships to disclose.

Employee of:

Carisma Therapeutics Inc.

Solid tumor challenges for adoptive cell therapy

1. Trafficking & penetration

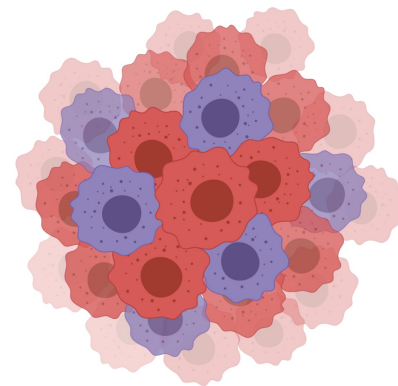
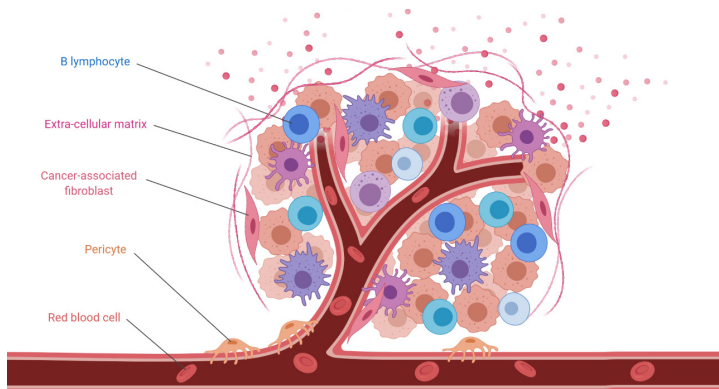
- Extravasation
- Homing
- Penetration

2. Tumor microenvironment

- Immunosuppression
- Exhaustion
- Metabolic challenges
- Poor proliferation & persistence
- Low antigen presentation
- Low Th1 cytokines

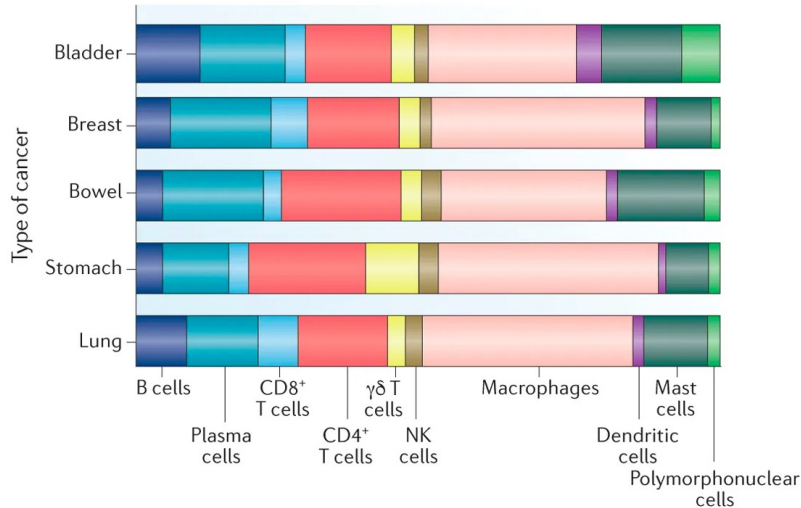
3. Target antigen heterogeneity

- Inherent resistance
- Antigen negative relapse



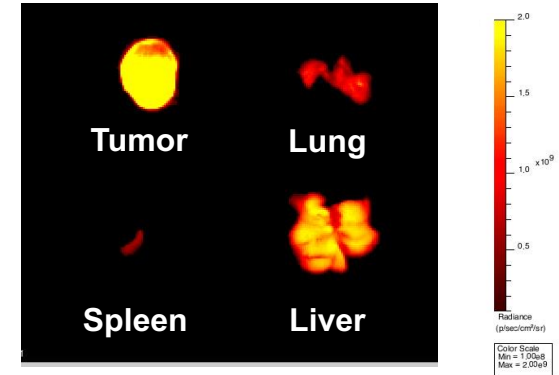
Monocytes & macrophages home to tumors

Myeloid cells are abundant in solid tumors



Pollard JW, et al. Nat Rev Drug Discov. 2019.

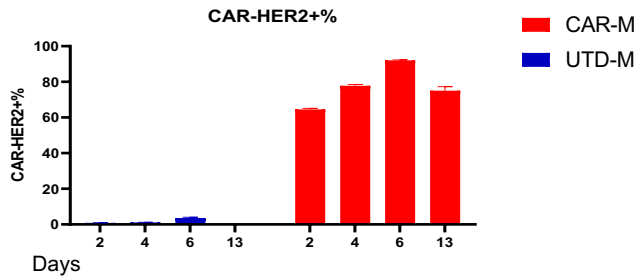
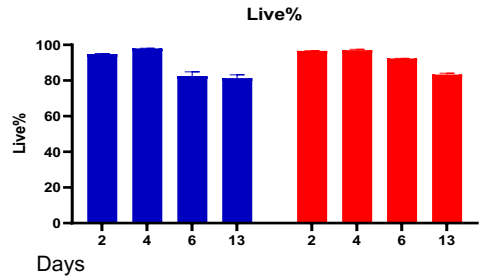
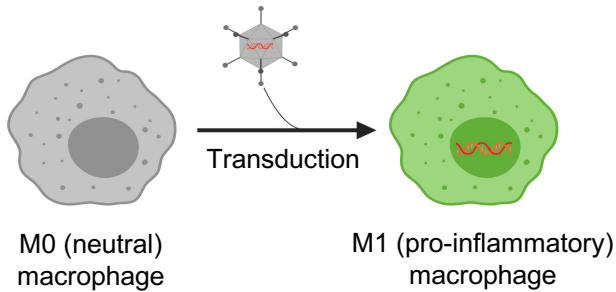
Adoptively transferred macrophages home to tumors



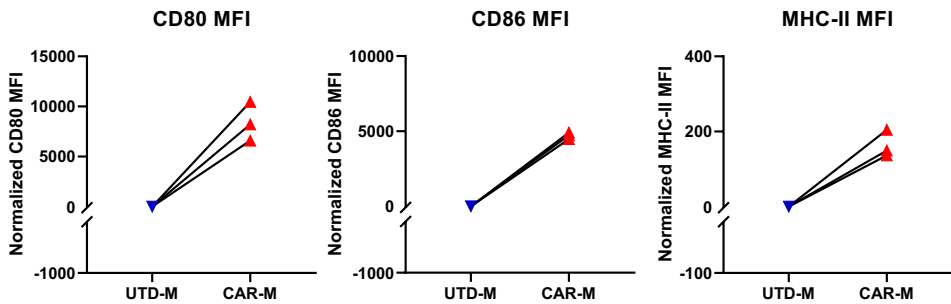
Biodistribution of IR-labeled human CAR-M
(Gastric carcinoma xenograft model)

Klichinsky M. et al. Nature Biotechnology. 2020

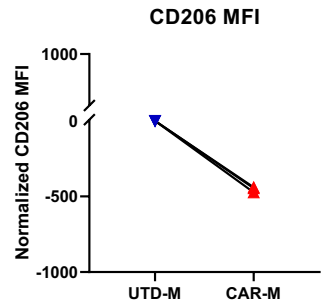
Ad5f35 induces CAR expression and promotes an M1 phenotype in murine MACs without affecting viability



M1 Markers

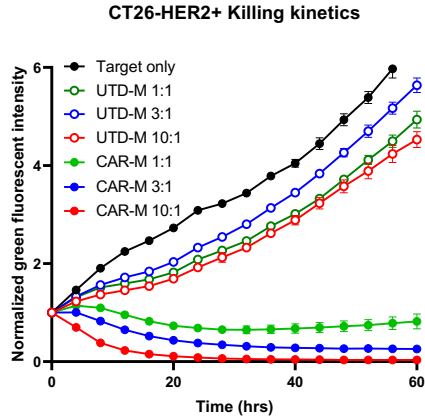


M2 Marker

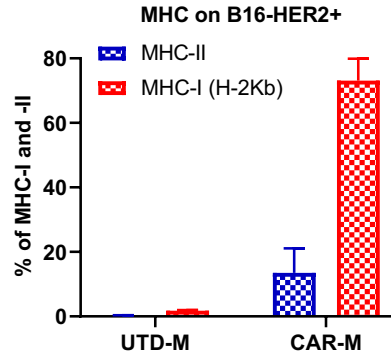


CARs redirect multiple macrophage effector functions

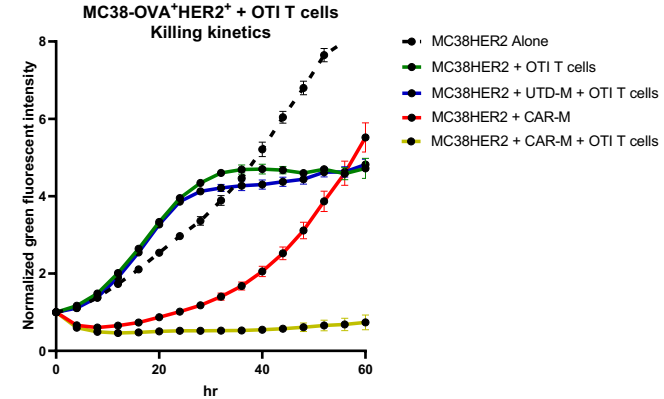
CAR-M clears HER2⁺ target cells



CAR-M induce MHC expression on tumor cells



CAR-M enhance tumor killing of transgenic TCR T cells (OTI OVA model)

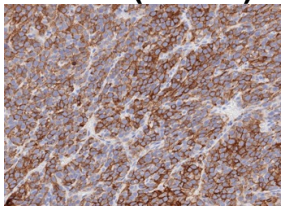


CAR-M shrink tumors and improve overall survival in immunocompetent mouse models

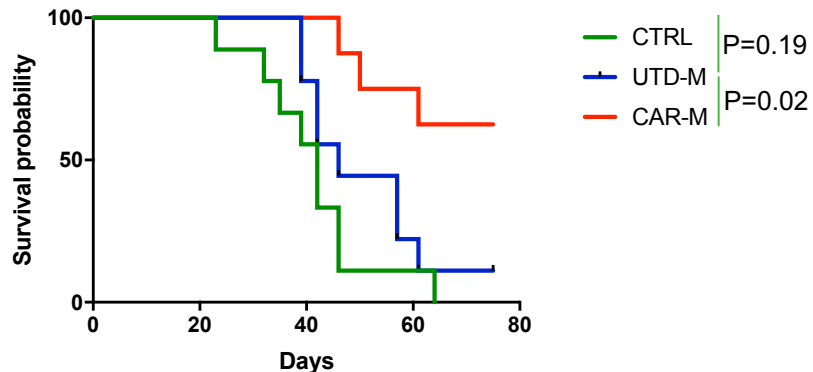
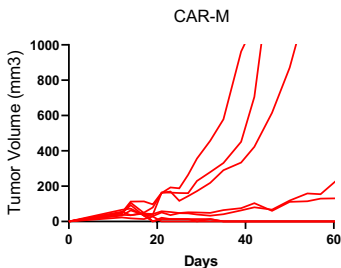
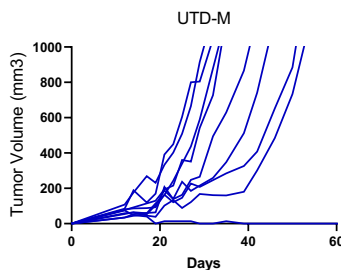
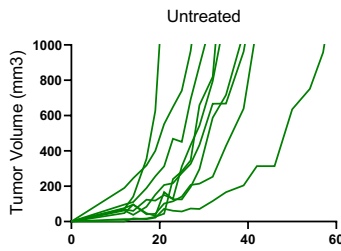
CAR-M lead to tumor control and improve OS against established CT26 (colon cancer) HER2+



CT26 (HER2)



HER2 IHC: HER2 3+



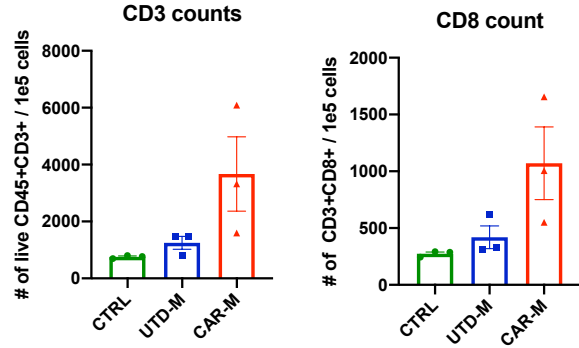
	n	Alive @ Day 75	Median Survival
CTRL	9	0/9 (0%)	42 days
UTD-M	9	1/9 (11.1%)	46 days
CAR-M	8	5/8 (62.5%)	Not reached

UTD: Untransduced; CAR: anti-HER2; OS: overall survival

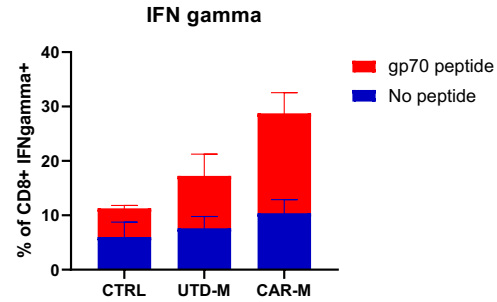
Tumor	Subcutaneous, grown 15 days
Treatment	Local administration

CAR-M reprogram and activate the TME in immunocompetent pre-clinical models

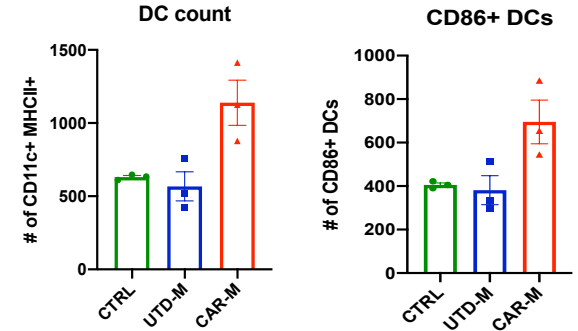
Increased infiltration of T cells



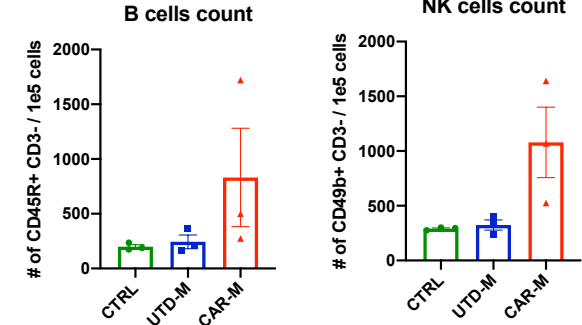
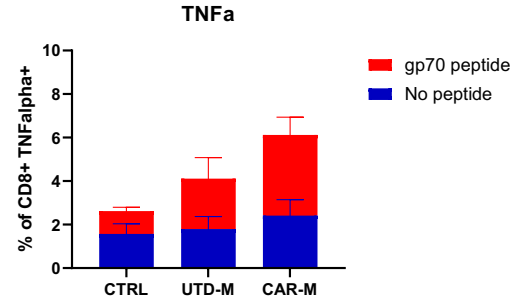
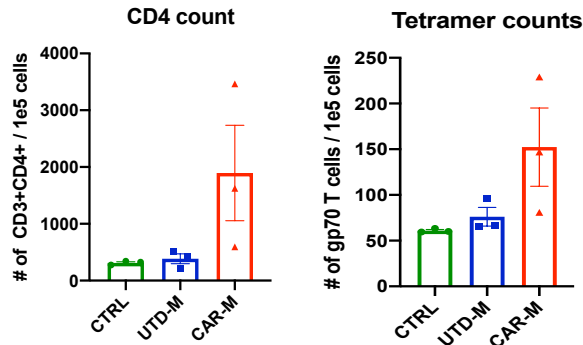
Ex vivo TIL restimulation with gp70



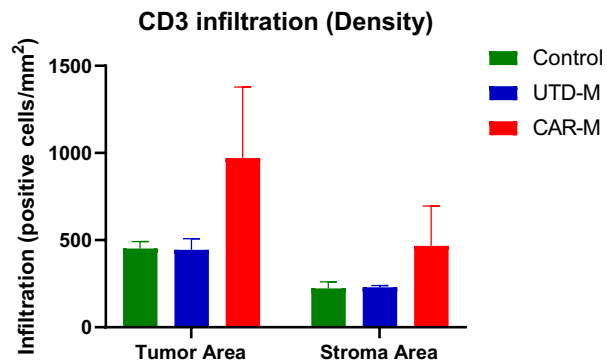
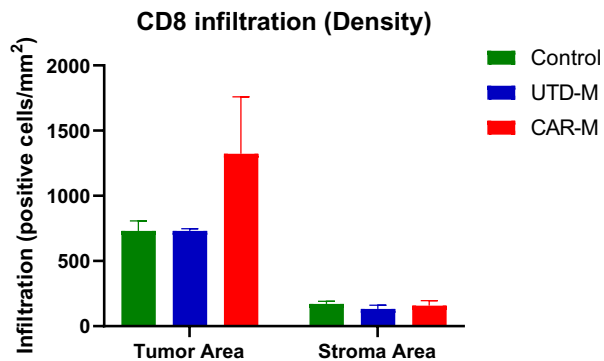
Increased infiltration & activation of DCs



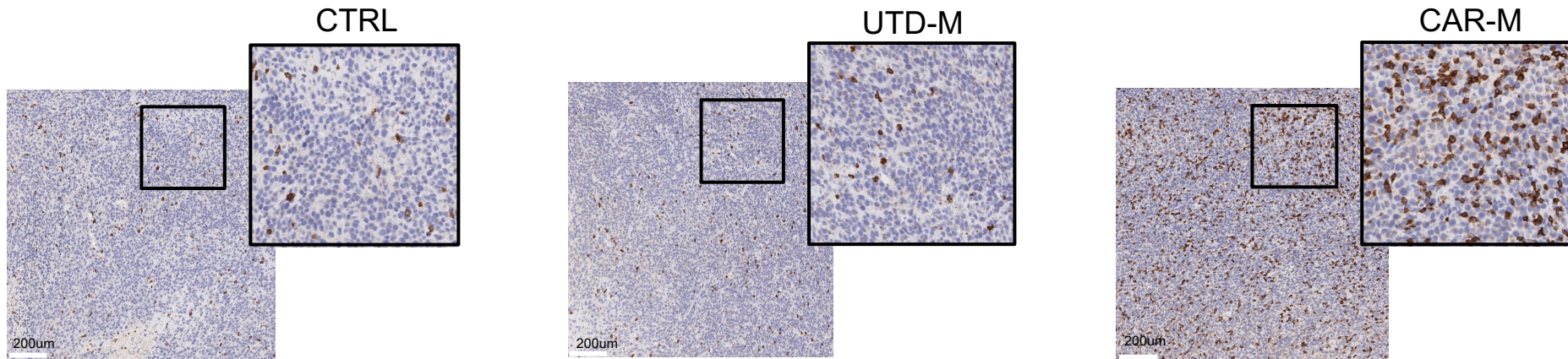
Increased infiltration of B cells and NK cells



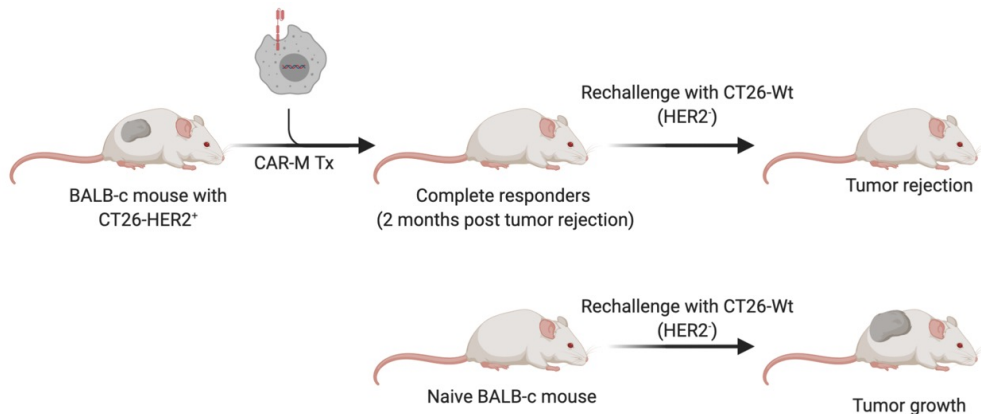
CAR-M drive T cell infiltration into solid tumors



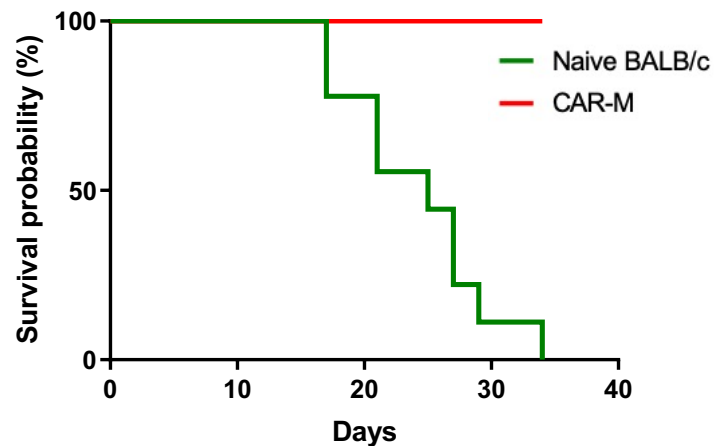
Representative CD8 IHC



CAR-M therapy vaccinates mice against tumor recurrence and prevents antigen negative relapse

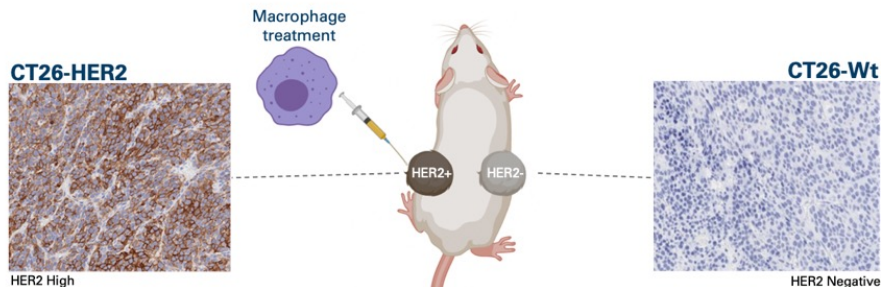


CT26 Wt (HER2-) rechallenge:
Kaplan Meir Survival Curve

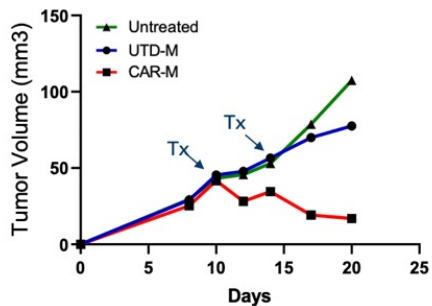


CAR-M promote systemic anti-tumor response and enhance abscopal effect

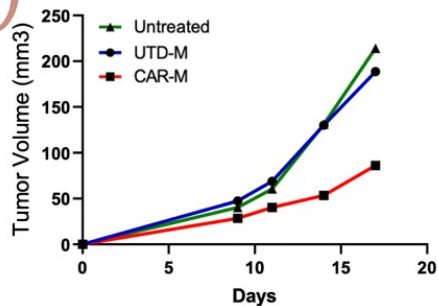
Immunocompetent Tumor Model



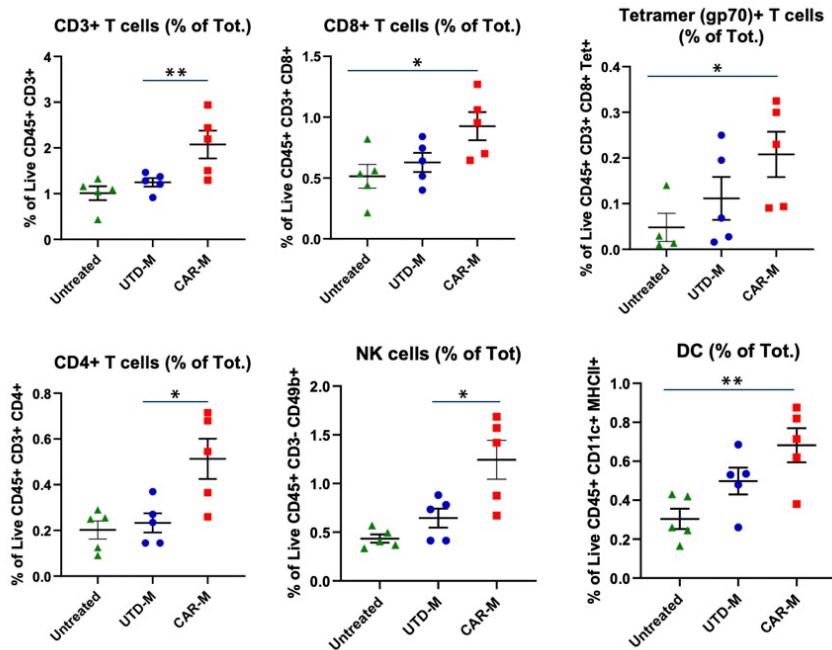
Treated Tumor: CT26-HER2



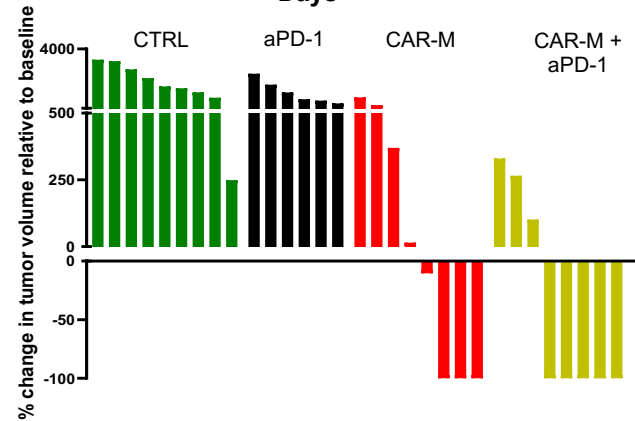
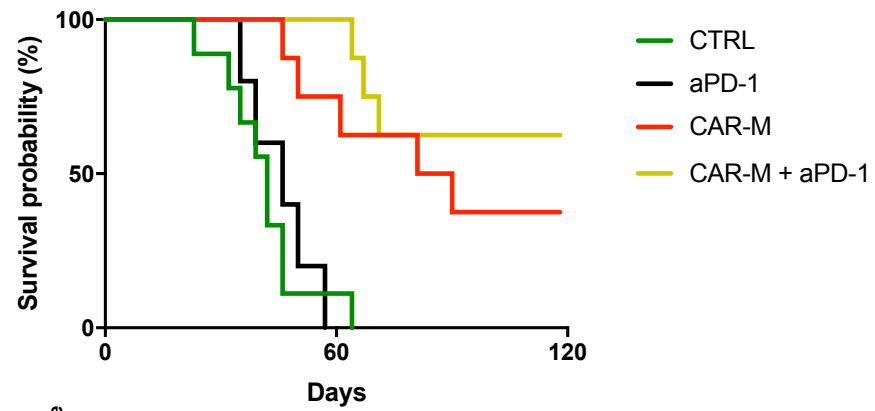
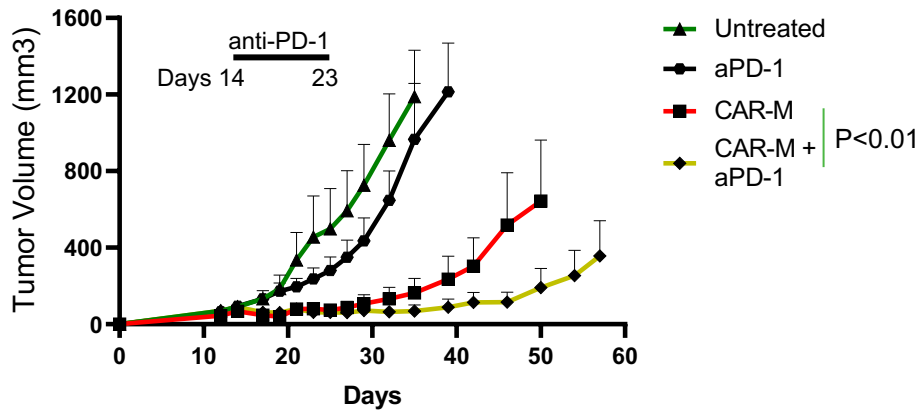
Abscopal Tumor: CT26-Wt



Evaluation of the TME in the HER2- (abscopal) tumor



CAR-M + PD-1 blockade leads to improved tumor control and survival in immunocompetent animals



Conclusions

- CAR-M quickly eradicate tumor cells in a CAR- and HER2-specific way
- CAR-M induce MHC expression on tumor cells and enhance immunorecognition of the target cells by T cells
- Local administration of CAR-M modulates the TME, impacts primary and abscopal tumor growth and increases mice survival
- CAR-M therapy vaccinates mice against tumor recurrence and prevents antigen negative relapse
- The combination of CAR-M with anti-PD-1 blockade leads to synergistic tumor control and significantly increases overall survival